



PRODUCT DESCRIPTION

Get more security by segmenting your security management into multiple virtual domains. Any size business can benefit—easily creating virtual domains based on geography, business unit or security function to strengthen security and simplify management.

Multi-Domain Security Management

Maximize security by segmenting your management into multiple virtual domains

YOUR CHALLENGE

Companies of any size can face security management challenges when their business spans offices located in several regions or countries. Multiple security gateways, multiple sites requiring different or conflicting security policies and multiple administrators can quickly create a complex security environment. Administrators need the right tools to effectively manage multiple security policies with rules enforcing appropriate user access and preventing attacks, while enabling secure communication and fail-over capabilities.

OUR SOLUTION

Check Point Multi-Domain Security Management provides more security and control by segmenting your security management into multiple virtual domains. Any size business can benefit—easily creating virtual domains based on geography, business unit or security function to strengthen security and simplify management. IT managers can easily deploy Multi-Domain Security Management into their current security environment, simplifying administration and leveraging their existing infrastructure. Organizations can expand their security management at any time, deploying new security domains with a single click for as little as \$1,500.

MULTI-DOMAIN SECURITY MANAGEMENT

When complexity or geography complicate management and threaten security, segmenting security into multiple virtual domains can provide dramatic improvements in operational efficiency and better security. Multi-Domain Security Management enables simultaneous, central management of many distinct security policies and consolidation of security hardware. Multi-Domain Management software blades, based on proven Provider-1 technology, help administrators consolidate their security management while preserving the independence of each domain. The Global Policy Software Blade enforces a common security baseline, while Security Domain Software Blades enable easy creation of new virtual management domains.

PRODUCT FEATURES

- Multi-domain, multi-policy management
- Centralized, independent security management and monitoring for all virtual domains
- Granular, role-based administration for increased accuracy
- Secure communications between all multi-domain components
- Flexible Multi-Domain Software Blades leverage existing security management

PRODUCT BENEFITS

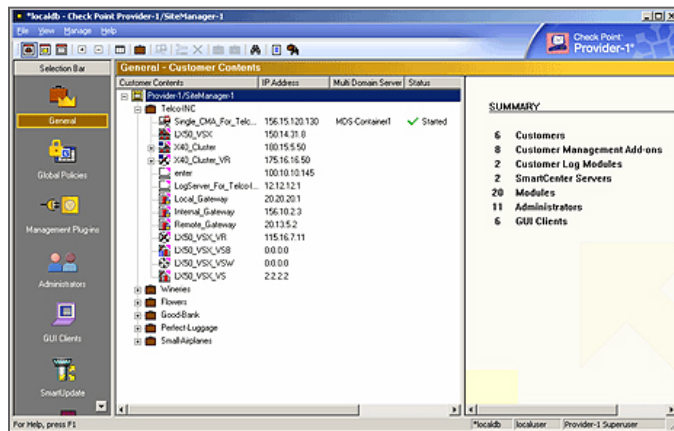
- Simplified management and provisioning of security in complex environments
- Stronger security with a single configuration for VPN, firewall, IPS and other protections
- Increased efficiency through consolidation of security management infrastructure and resources
- Common security baseline enforced across multiple domains with the Global Policy Software Blade
- Easy transition to multi-domain management, adding new security management domains for as little as \$1,500 per Domain Software Blade



Multi-Domain Security Management

MULTI-DOMAIN, MULTI-POLICY MANAGEMENT

Segregate complex management environments into multiple domains. Each management domain is an independent security management environment with a separate database, log server and its own set of security policies.



Multi-Domain GUI — comprehensive view of all networks and policies

SECURED COMMUNICATIONS FOR ALL MULTI-DOMAIN COMPONENTS

Create separate certificate authorities for each management domain and the multi-domain system to ensure secure and private communications between gateways and their management

domains, and between management domains and the multi-domain system.

GLOBAL POLICY

Define templates for global security rules and assign them to multiple domains. Global security policy can be assigned to all managed domains or just to a select group of domains.

GRANULAR ADMINISTRATOR CONTROLS

Create and centrally manage multiple administrators for multi-domain management environments. Administrators can be assigned to specific domains.

CENTRALIZED MONITORING

Monitor all multi-domain system components (domains, global policy, administrators etc.) and gateways from a central location.

DOMAIN-INDEPENDENT LOG SERVER

Collect and store security gateway logs for each domain in a separate, independent log server.

REDUNDANCY & BACKUP

Synchronize multi-domain management databases (MDS database, global policy and ICA database) between multiple multi-domain servers. Backup your virtual management domain using standard security management.

MULTI-DOMAIN SECURITY MANAGEMENT FEATURES

Feature	Details
Multi-Domain Security Management	
Multiple domain-based management	<ul style="list-style-type: none"> Complex management environment can be segregated into multiple management domains Each management domain is an independent security management environment with a separate database, log server and its own set of security policies
Multi-domain dashboard	<ul style="list-style-type: none"> Single security console to manage multiple domains Graphical interface to view, create and manage all management domains Seamless launch of Check Point SmartConsole applications (SmartDashboard, SmartView Tracker etc.) for each management domain Assign global policy to different management domains Create and manage administrators and GUI clients
Distributed domain management	Management domains can be distributed across many multi-domain servers
Secure Communications for All Multi-Domain Components	
Global rules	<ul style="list-style-type: none"> Define global security rules templates and assign them to virtual domains Global policy can be assigned to a group of management domains
Global objects	Centralized configuration and management of shared objects that can be used across multiple domains
Global VPN policy	Centralized definition and management of VPN communities across multiple domains
Global IPS policy	Centralized definition and management of IPS policies across multiple management domains



Feature	Details
Granular Administrator Controls	
Granular role-based administration	<ul style="list-style-type: none"> • Create and centrally manage multiple administrators for multi-domain environments • Assign administrators to specific domains
Hierarchical administrator role support	Assign administrator rights to manage specific domains and rights and permissions to manage different aspects of the multi-domain system
Multiple simultaneous administrator access	Allows multiple administrators to work on different management domains simultaneously
Multiple authentication methods for administrators	Multiple authentication methods for administrators using internal certificate authority or external third party systems including RADIUS, TACACS, and RSA
Monitoring	
Centralized monitoring of multi-domain systems	Centralized monitoring of all multi-domain system components (domains, global policy, administrators etc.)
Centralized monitoring of managed gateways	Centralized monitoring of all gateways managed by the multi-domain management system
Log Management	
Domain independent log server	Each domain has a predefined log server for collection and storage of logs from all security gateways managed by that domain
Multi-domain log module support	Optional standalone multi-domain server dedicated to log collection and storage, allowing separation of critical management activities from logging traffic
Domain for log server support	Optional dedicated domain for log collection and storage, allowing separation of critical domain management activities from logging activities
Redundancy & Backup	
Multi-domain server synchronization	Support synchronization of multi-domain management databases (MDS database, Global Policy and ICA database) between multiple multi-domain servers
Domain high availability	Allow synchronization of domain databases between multiple multi-domain servers
Export/import of multi-domain systems and domains	Export/import entire multi-domain system or a specific domain for maximum backup and recovery options
Security management backup	Backup your virtual management domain to a standard security management system
Deployment	
Multi-platform support	Supported on SecurePlatform, Red Hat Linux and Solaris

MULTI-DOMAIN SECURITY MANAGEMENT SERVER REQUIREMENTS

Component	Linux	Solaris	SecurePlatform
CPU	Intel Pentium Processor E2140 or 2 GHz equivalent processor	UltraSPARC III 900MHz	Intel Pentium Processor E2140 or 2 GHz equivalent processor
Memory	4GB	4GB	4GB
Disk Space	2GB	2GB	10GB (install includes OS)
CD-ROM Drive	Yes	Yes	Yes (bootable)